

## Louver LA4A Steel

SPIRO DUCT + FITTINGS + GRILLES + DIFFUSERS + FILTERS + FLEXIBLE DUCT + **LOUVERS** + ACCESORIES

Galvanized Steel louver with deflective adjustable Blades, 3" apart, parallel to the horizontal dimension with a 4" U-Frame (6" optional). Optional bird mesh.

This model steel version is manufactured in galvanized Steel and plastic bushings for smoother operation.

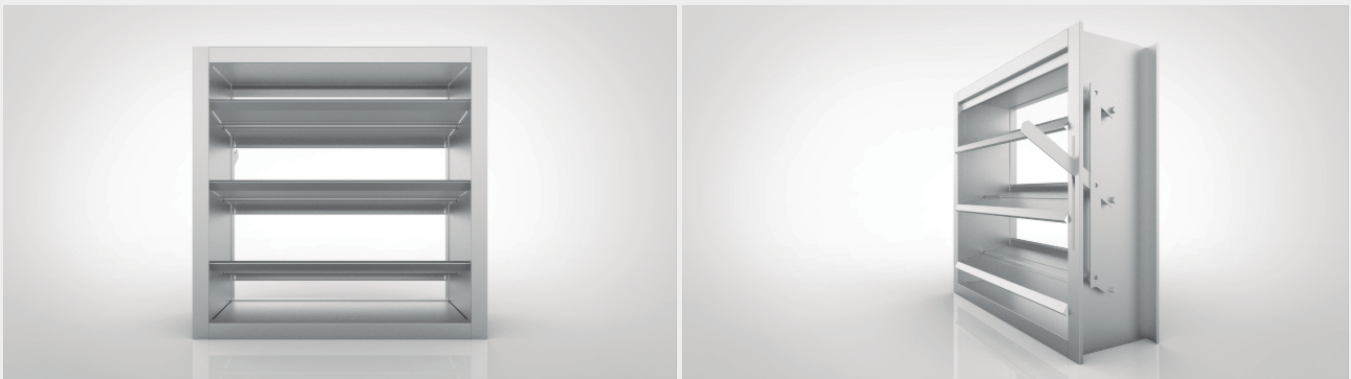
### 1 Principal Features

LA4L- Aluminum LA4A- Steel

**MATERIALS:** Our aluminum profiles are tempered to achieve a greater resistance, and they are manufactured with the same design as the steel profiles, which are made from galvanized steel.

**FINISH:** Baked electrostatic paint (polyester) in White Vermont steel and aluminum (with other optional finishes).

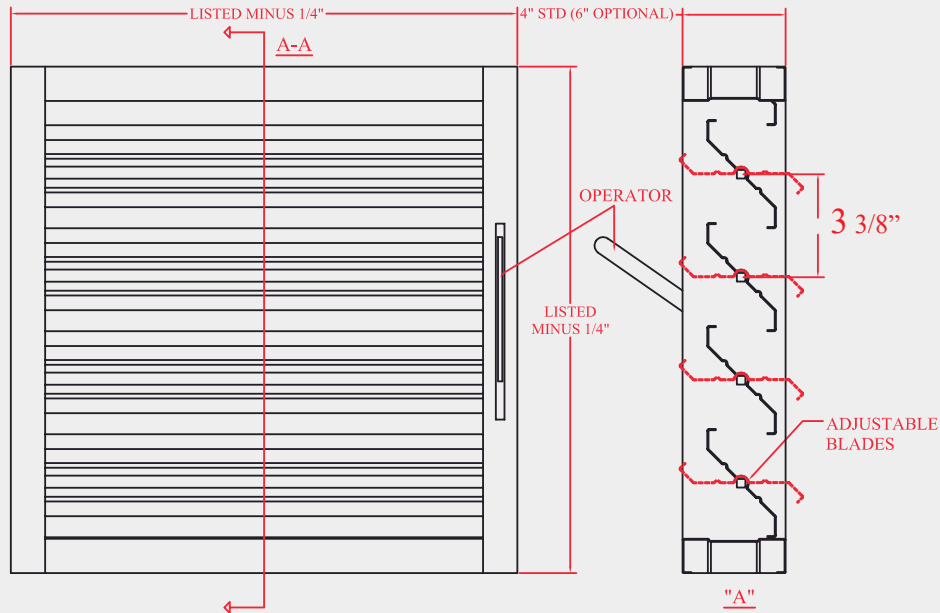
### 2 View



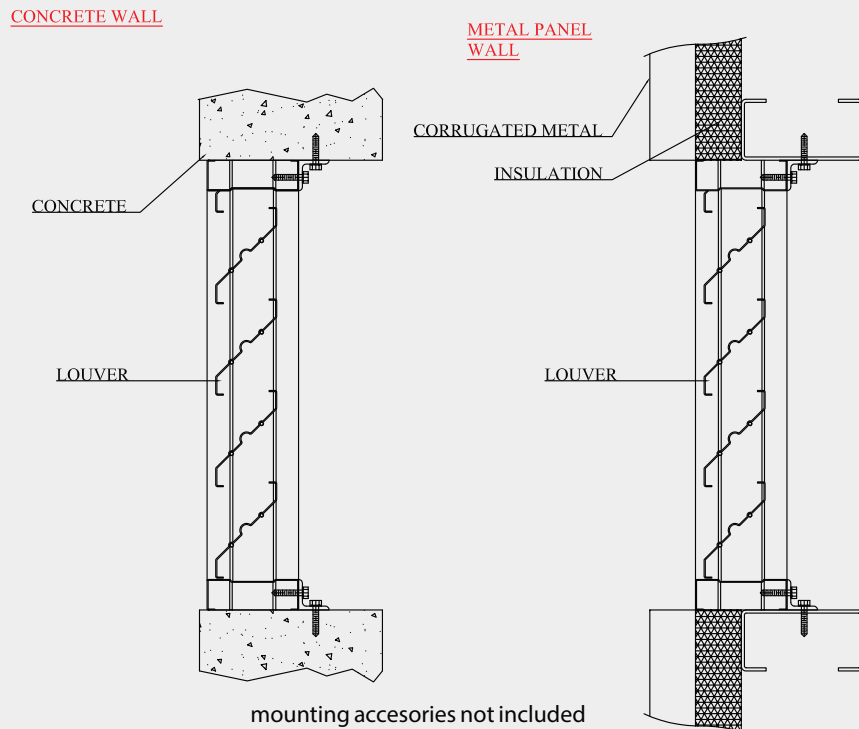
**PACKAGING:**  
Airtight plastic packaging

## Louver LA4A Steel

SPIRO DUCT + FITTINGS + GRILLES + DIFFUSERS + FILTERS + FLEXIBLE DUCT + **LOUVERS** + ACCESORIES



### 3 Mounting



## Louver LA4A Steel

SPIRO DUCT + FITTINGS + GRILLES + DIFFUSERS + FILTERS + FLEXIBLE DUCT + **LOUVERS** + ACCESORIES

