

## Supply Grilles ITAA Steel / ITAL Aluminium

SPIRO DUCT + FITTINGS + GRILLES + DIFFUSERS + FILTERS + FLEXIBLE DUCT + ACCESORIES

Supply grille, high performance, high speed and high volume; designed to meet the most demanding standards for throw and volume, thanks to its adjustable drum where you can perfectly modify the flow of air in the vertical plane and smooth motion while 3" blades can direct horizontally individually. (Option in aluminum mod. ITAL)

### 1 Principal Features

#### Materials:

Made with high tickness steel, frame, drum and blades.

#### Finish:

Bright White (standard). (With options in other colors)

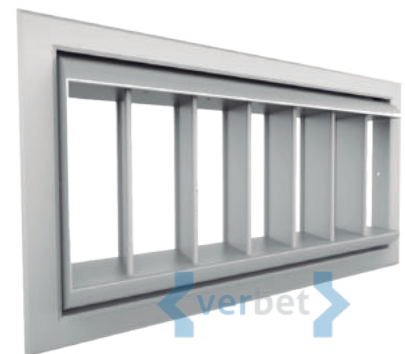
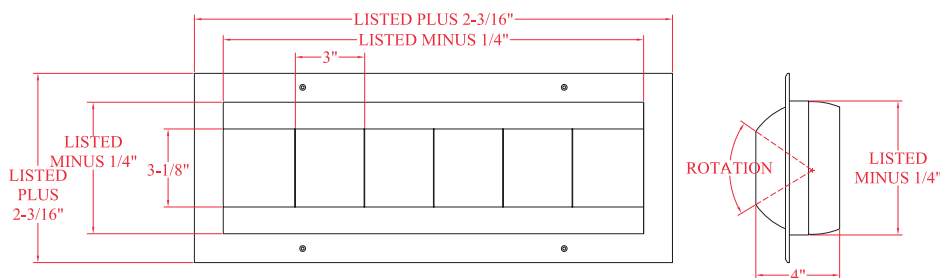
#### Applications:

Ideal for installations with long throw requirements: shopping centers, supermarkets, airports, department stores or any facility with large open spaces.

#### Sizes:

Available in sizes from 10" X 6" to 48" X 16"

### 2 Views



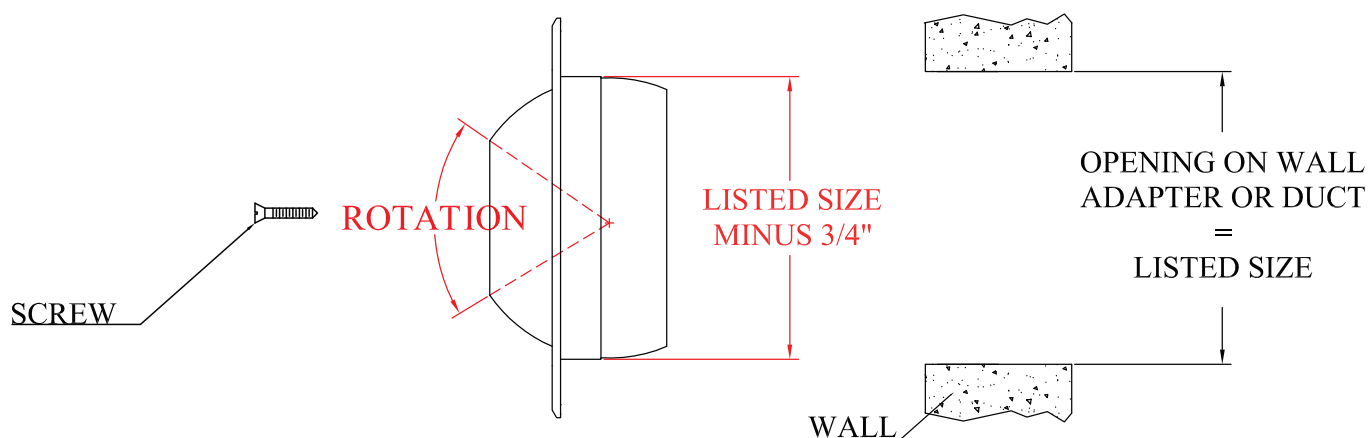
Includes foam seal in the frame to prevent air leaks and fixing screws.

## Supply Grilles ITAA Steel / ITAL Aluminium

SPIRO DUCT + FITTINGS + GRILLES + DIFFUSERS + FILTERS + FLEXIBLE DUCT + ACCESORIES

### 3 Mounting

WALL



## Supply Grilles ITAA Steel / ITAL Aluminium

SPIRO DUCT + FITTINGS + GRILLES + DIFFUSERS + FILTERS + FLEXIBLE DUCT + ACCESORIES

4

Data

TABLAS DE SELECCIÓN Y DESEMPEÑO										
Min. Duct Area sq. Ft.	Listed Size, Inches	Duct Velocity fpm	300	400	500	600	700	800	900	1000
0.33	12 x 4	Vel. Press, in wg.	0.006	0.010	0.016	0.022	0.031	0.040	0.050	0.062
		cfm	101	124	167	201	234	267	301	334
		NC (Noise Criteria)				15	19	31	37	41
		Total Pressure, in. Wg.	0.04	0.06	0.10	0.14	0.19	0.26	0.32	0.4
		Throw, ft.	10-13-20	13-16-23	15-18-26	16-19-29	18-21-31	19-22-33	20-23-36	21-25-38
0.5	18 x 4	cfm	151	201	251	301	351	401	451	501
		NC (Noise Criteria)				19	26	34	37	43
		Total Pressure, in. Wg.	0.03	0.05	0.07	0.11	0.15	0.2	0.25	0.31
		Throw, ft.	14-16-23	16-19-27	18-21-31	19-23-34	21-25-36	22-27-39	24-29-41	25-30-43
		cfm	201	267	334	401	467	536	601	666
0.66	24 x 4	NC (Noise Criteria)				20	27	35	38	44
		Total Pressure, in. Wg.	0.03	0.05	0.10	0.11	0.15	0.2	0.25	0.31
		Throw, ft.	16-19-27	18-22-32	20-24-26	23-27-39	24-29-42	27-31-45	28-33-49	29-35-51
		cfm	251	334	416	501	584	666	751	831
		NC (Noise Criteria)				12	22	28	35	46
0.83	30 x 4	Total Pressure, in. Wg.	0.03	0.05	0.07	0.11	0.15	0.2	0.25	0.33
		Throw, ft.	18-21-31	20-24-35	23-28-40	25-30-44	28-33-47	29-35-51	31-37-54	32-39-56
		cfm	301	401	501	601	701	801	901	1001
		NC (Noise Criteria)				13	23	30	37	41
		Total Pressure, in. Wg.	0.03	0.05	0.07	0.11	0.15	0.2	0.25	0.31
1.00	36 x 6	Throw, ft.	19-23-33	22-26-38	25-30-43	27-33-48	29-35-51	31-38-55	33-40-58	35-42-62
		cfm	351	466	584	701	816	934	1051	1161
		NC (Noise Criteria)				25	32	38	42	49
		Total Pressure, in. Wg.	0.03	0.05	0.07	0.11	0.15	0.20	0.25	0.31
		Throw, ft.	21-25-36	24-28-42	26-32-47	29-35-51	32-38-58	34-41-60	36-43-64	38-46-67
1.16	42 x 4	cfm	401	534	666	801	934	1066	1201	1331
		NC (Noise Criteria)				15	25	32	38	50
		Total Pressure, in. Wg.	0.03	0.05	0.07	0.11	0.15	0.2	0.25	0.31
		Throw, ft.	22-27-39	26-31-45	28-35-50	32-39-55	34-42-60	36-45-64	38-47-66	40-50-71
		cfm	501	666	834	1001	1161	1331	1501	1661
1.33	48 x 4	NC (Noise Criteria)				16	26	35	39	43
		Total Pressure, in. Wg.	0.03	0.05	0.07	0.11	0.15	0.2	0.25	0.31
		Throw, ft.	26-30-43	29-34-50	33-39-56	36-43-61	39-45-66	41-49-71	43-52-75	47-55-80
		cfm	130	173	216	259	302	343	388	431
		NC (Noise Criteria)	<10	<10	17	23	29	34	43	42
1.66	60 x 4	Total Pressure, in. Wg.	0.05	0.08	0.13	0.18	0.25	0.32	0.41	0.51
		Throw, ft.	5-16-16	7-11-22	9-14-26	11-16-29	13-19-31	15-22-33	16-25-35	18-26-37
		cfm	251	334	417	501	584	667	750	834
		NC (Noise Criteria)	<10	11	19	25	31	35	40	46
		Total Pressure, in. Wg.	0.05	0.08	0.13	0.18	0.25	0.32	0.41	0.51
0.83	18 x 6	Throw, ft.	11-16-28	14-21-33	18-26-37	21-28-40	25-31-43	27-33-46	28-35-49	30-37-52
		cfm	412	549	586	822	959	1096	1233	1370
		NC (Noise Criteria)	<10	10	18	24	29	34	38	42
		Total Pressure, in. Wg.	0.05	0.08	0.13	0.18	0.25	0.35	0.41	0.51
		Throw, ft.	17-16-37	23-30-42	27-33-47	30-37-52	32-39-56	34-42-60	37-45-63	38-47-67
1.37	30 x 6	cfm	814	1085	1356	1627	1898	2169	2440	2711
		NC (Noise Criteria)	<10	16	23	30	35	40	44	48
		Total Pressure, in. Wg.	0.05	0.08	0.13	0.18	0.25	0.32	0.41	0.51
		Throw, ft.	30-36-51	34-42-59	38-47-66	42-51-73	45-55-78	48-59-84	51-63-89	54-66-94
		cfm	201	267	334	401	466	534	601	666
0.66	12 x 8	NC (Noise Criteria)				19	27	33	40	45
		Total Pressure, in. Wg.	0.04	0.06	0.10	0.14	0.2	0.26	0.32	0.40
		Throw, ft.	12-19-28	16-22-32	19-24-36	22-26-39	23-28-42	25-36-45	28-32-49	29-35-50
		cfm	301	401	501	601	701	801	901	1001
		NC (Noise Criteria)				19	26	34	37	43
1.00	18 x 8	Total Pressure, in. Wg.	0.04	0.06	0.10	0.14	0.20	0.26	0.32	0.40
		Throw, ft.	18-23-33	21-26-38	24-29-42	27-32-47	29-34-50	31-27-54	33-39-58	34-41-60
		cfm	401	534	666	801	934	1066	1201	1331
		NC (Noise Criteria)				13	22	30	37	43
		Total Pressure, in. Wg.	0.04	0.06	0.10	0.14	0.20	0.26	0.32	0.40
1.33	24 x 8	Throw, ft.	21-26-39	25-30-44	27-34-49	31-37-54	33-40-59	35-43-63	38-46-66	40-49-70
		cfm	501	666	834	1001	1166	1334	1501	1666
		NC (Noise Criteria)				15	25	32	38	44
		Total Pressure, in. Wg.	0.04	0.06	0.10	0.14	0.20	0.26	0.32	0.40
		Throw, ft.	24-29-43	28-34-50	31-38-55	33-42-60	36-45-66	38-49-70	41-52-74	43-55-79

## Supply Grilles ITAA Steel / ITAL Aluminium

SPIRO DUCT + FITTINGS + GRILLES + DIFFUSERS + FILTERS + FLEXIBLE DUCT + ACCESORIES

TABLAS DE SELECCIÓN Y DESEMPEÑO										
Min. Duct Area sq. Ft.	Listed Size, Inches	Duct Velocity fpm	300	400	500	600	700	800	900	1000
2.00	36 x 8	Vel. Press, in wg.	0.006	0.010	0.016	0.022	0.031	0.040	0.050	0.062
		cfm	601	801	1001	1201	1401	1601	1801	2001
		NC (Noise Criteria)			16	26	33	40	45	50
		Total Pressure, in. Wg.	0.04	0.07	0.11	0.15	0.22	0.28	0.35	0.44
		Throw, ft.	27-32-47	31-37-54	35-41-60	38-45-66	41-49-71	43-52-76	46-55-81	48-59-85
2.33	42 x 8	cfm	701	934	1166	1401	1634	1866	2101	2336
		NC (Noise Criteria)			16	27	34	41	46	51
		Total Pressure, in. Wg.	0.04	0.07	0.11	0.15	0.22	0.28	0.35	0.44
		Throw, ft.	28-34-50	32-39-58	36-44-64	39-48-70	43-52-76	46-56-82	48-59-87	50-62-92
		cfm	401	534	666	801	934	1066	1201	1331
2.66	48 x 8	NC (Noise Criteria)			17	27	35	42	47	51
		Total Pressure, in. Wg.	0.04	0.07	0.11	0.15	0.22	0.28	0.35	0.44
		Throw, ft.	3-37-55	35-43-63	40-47-70	43-50-77	47-57-84	50-60-90	53-64-95	56-68-100
		cfm	1001	1336	1666	2001	2336	2666	3001	3336
		NC (Noise Criteria)			18	28	35	42	48	52
3.33	60 x 8	Total Pressure, in. Wg.	0.04	0.07	0.11	0.15	0.22	0.28	0.35	0.44
		Throw, ft.	32-41-61	38-47-70	42-53-79	46-59-85	50-63-92	54-67-98	57-72-105	60-75-111
		cfm	439	585	731	876	1022	1168	1314	1460
		NC (Noise Criteria)	<10	13	20	26	31	36	40	44
		Total Pressure, in. Wg.	0.03	0.05	0.09	0.12	0.17	0.22	0.28	0.34
1.46	20 x 10	Throw, ft.	18-27-38	25-31-44	28-34-49	31-38-53	31-38-53	33-41-58	36-44-62	40-49-69
		cfm	1075	1434	1792	2150	2508	2866	3224	3583
		NC (Noise Criteria)	<10	16	23	29	35	40	44	48
		Total Pressure, in. Wg.	0.03	0.05	0.09	0.12	0.17	0.22	0.28	0.34
		Throw, ft.	34-42-59	39-48-68	44-57-76	48-59-84	52-64-90	56-68-96	59-72-102	62-76-108
3.58	50 x 10	cfm	1500	2000	2499	2999	3499	3998	4498	4997
		NC (Noise Criteria)	<10	18	25	31	36	41	45	49
		Total Pressure, in. Wg.	0.03	0.05	0.09	0.12	0.17	0.22	0.28	0.34
		Throw, ft.	40-49-70	47-57-81	52-64-90	57-70-99	62-75-107	66-81-114	70-85-121	74-90-127
		cfm	525	699	874	1048	1223	1397	1572	1747
1.75	20 x 12	NC (Noise Criteria)	<10	13	20	27	32	37	41	45
		Total Pressure, in. Wg.	0.03	0.05	0.08	0.11	0.16	0.2	0.26	0.32
		Throw, ft.	22-29-41	27-34-48	31-38-53	34-41-58	36-45-63	39-48-67	41-50-71	43-53-75
		cfm	1032	1376	1720	2064	2408	2752	3095	3439
		NC (Noise Criteria)			17	26	33	39	44	49
3.44	40 x 12	Total Pressure, in. Wg.	0.03	0.05	0.08	0.11	0.16	0.2	0.26	0.32
		Throw, ft.	33-41-58	39-47-67	43-53-75	47-58-82	51-62-88	55-67-94	58-71-100	61-75-106
		cfm	1794	2392	2990	3587	4185	4783	5381	5975
		NC (Noise Criteria)			20	28	35	41	47	52
		Total Pressure, in. Wg.	0.03	0.05	0.08	0.11	0.16	0.2	0.26	0.32
5.98	70 x 12	Throw, ft.	44-54-76	51-62-88	57-70-98	62-76-108	67-82-117	72-88-125	76-93-132	80-98-139
		cfm	495	660	825	990	1155	1319	1484	1649
		NC (Noise Criteria)			14	23	30	36	41	46
		Total Pressure, in. Wg.	0.02	0.04	0.07	0.10	0.13	0.17	0.22	0.27
		Throw, ft.	19-28-40	25-33-46	30-37-52	33-40-57	35-43-61	38-46-65	40-49-69	42-52-73
1.65	15 x 15	cfm	1603	2137	2671	3205	3739	4272	4806	5340
		NC (Noise Criteria)			19	28	35	41	47	51
		Total Pressure, in. Wg.	0.02	0.04	0.07	0.10	0.13	0.17	0.22	0.27
		Throw, ft.	42-51-72	48-59-83	54-66-93	59-72-102	64-78-110	68-83-118	72-88-125	76-93-132
		cfm	1875	2500	3125	3750	4375	5000	5625	6250
6.25	60 x 15	NC (Noise Criteria)			19	27	35	41	46	51
		Total Pressure, in. Wg.	0.02	0.04	0.06	0.09	0.13	0.16	0.21	0.26
		Throw, ft.	45-55-78	52-64-90	58-71-101	64-78-110	69-84-119	74-90-127	78-96-135	82-101-142
		cfm	2236	2980	3725	4470	5215	5960	6705	7450
		NC (Noise Criteria)			21	29	36	42	48	53
7.45	70 x 15	Total Pressure, in. Wg.	0.02	0.04	0.07	0.1	0.13	0.17	0.22	0.27
		Throw, ft.	49-60-85	57-70-98	63-78-110	70-85-120	75-92-130	80-98-139	85-104-148	90-110-155